

## Your Essential Windows Mobile Companion

### Table of Contents

---

Welcome to Your REDFLY	2	Using Bluetooth	18
Getting Started	2	Power-Saving Options	25
Connecting to the REDFLY for the First Time	4	Uninstalling REDFLY Software	28
Using the REDFLY	5	Troubleshooting	30
Navigating the REDFLY	6	Cleaning the REDFLY	33
Keyboard Shortcuts	6	Customer Service	33
Using Alt-Tab	10	Warranty	33
Using the Touch Pad	10	Specifications	34
Working with the Display	13	Using the REDFLY Safely	35
Using an external Monitor or Projector	14	End User License Agreement	36
Playing Video	15	Regulatory Compliance	38
Using External Devices	16		

# Welcome to Your REDFLY

---

Meet the REDFLY—the essential Windows Mobile Smartphone Companion. The REDFLY will greatly enhance your productivity with its larger screen and keyboard as well as its connectivity options. Like a great assistant, the REDFLY simplifies and accelerates getting your work done.

Using the REDFLY is as simple as using your smartphone—because it is your smartphone! E-mail, voicemail, contact management, and all the other familiar Windows Mobile features act exactly the same, so there's no learning curve. Moving up to the REDFLY provides strong peace of mind since you don't have to worry about:

- Constantly synchronizing data yet again with your phone to another device
- Learning yet another set of applications, procedures, and operating system
- Protecting yet another device from viruses, malware and other threats
- Losing company or personal data on yet another device

The REDFLY simplifies your workday by completely leveraging your familiar Windows Mobile applications on the smartphone with the REDFLY's easier to use keyboard and larger screen

## Getting Started

---

You need to install REDFLY software on your Windows Mobile phone to use the REDFLY. You can choose to install:

- Over-the-Air directly to your smartphone
- From your PC using ActiveSync

**Note:** For Network Installation procedures, please visit [www.celiocorp.com/support](http://www.celiocorp.com/support) for detailed instructions.

To setup your REDFLY for the first time, have ready:

1. Your Windows Mobile smartphone with an active Internet connection OR a PC with Microsoft ActiveSync (or "Windows Mobile Device Center for Microsoft Vista" on Vista systems) and an Internet connection.
2. Your smartphone's USB connecting cable. (Contact your local retailer for a replacement if you do not have this cable.)
3. Your REDFLY.

First, open the REDFLY and remove the protective plastic film from the display.

For best results, plug in your REDFLY to the AC adapter and allow at least 3 hours to fully charge the battery

### OVER-THE-AIR SMARTPHONE INSTALLATION

**Note:** Cell phone data rates will apply to this download.

1. Use your smartphone browser to go to: <http://www.celiocorp.com/install/mobile>
2. Select the *Over the Air Installation* link.
3. Accept the End User License Agreement and click **Download**.
4. Confirm that the box marked *Open File After Download* is checked.
5. Click **Yes** to download and run the install file on your smartphone.
6. Follow the onscreen directions to complete the installation.

After installing the REDFLY software, the setup program will reset your phone.

**Note:** Motorola Q phones do not automatically reset if they are connected either to USB or to the AC adapter. Simply press the phone's On switch to complete the install.



## INSTALLING FROM YOUR COMPUTER

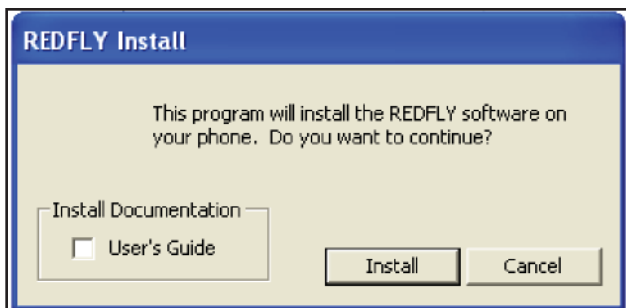
You can also setup the REDFLY using your PC with an Internet connection. This requires Microsoft ActiveSync (or “Windows Mobile Device Center for Microsoft Vista”) on your PC. (If you have not used ActiveSync or Device Center before, please refer to your phone’s manual for instructions.)

To do the install:

1. Run ActiveSync (or Device Center) on your PC.
2. Power on your smartphone and connect it to your PC using your USB connecting cable.

ActiveSync (or Device Center) will automatically find your phone and say “Connected”. (If not, refer to your Microsoft documentation.)

3. Use your PC browser to go to: <http://www.celiocorp.com/install>
4. Select the *Installing From Your Computer* link.
5. Accept the End User License Agreement and click **Download**.
6. Click **Run**.
7. Click **Run** again. The PC Install dialog appears:



8. If you want to include the REDFLY User’s Guide in your download, check the box. (This will place a copy of the Guide in the My Documents folder on your PC.)
9. Click Install.
10. Follow the onscreen instructions on your PC and your phone to complete the installation.

After installing the REDFLY software, the setup program will automatically reset your phone. You are now ready to connect to your REDFLY.

## POSSIBLE INSTALLATION ISSUES

**ERROR:** “Error occurred while attempting to contact your phone”

**REMEDY:** Verify that your phone is connected to your PC. Check the cable and connections to be sure it is firmly seated into the USB port and your phone. Then rerun the Setup program.

**ERROR:** “Error installing the REDFLY software as the program was not digitally signed”

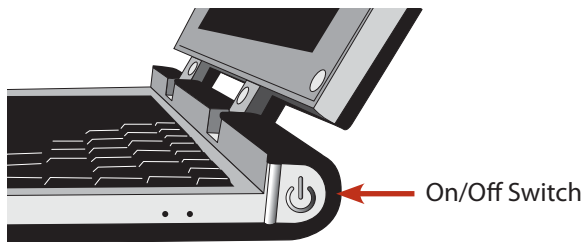
**REMEDY:** You need to confirm that you accept the REDFLY software on your smartphone. Rerun the Setup program and choose Yes to continue with the installation.

# Connecting to the REDFLY for the First Time

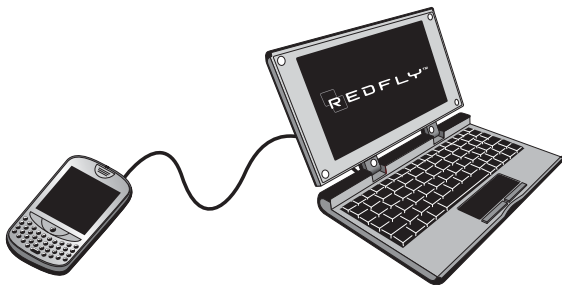
---


Once you have the REDFLY software on your smartphone, you are ready to connect to the REDFLY companion.

1. Power on your phone.
2. Power on the REDFLY.



3. Plug your USB connecting cable into your phone and into your REDFLY:



Your phone will automatically detect the connection to the REDFLY. It will then switch your phone display and keyboard functions to the REDFLY. The REDFLY system tray will now show the “connected via USB” status icon: 

## Screen Background on Non-touchscreen Phones

The REDFLY installs a new default Today screen background on non-touchscreen smartphones:



This enhancement takes full advantage of the larger screen size on the REDFLY (which some standard smartphone backgrounds do not). You can change this background using your normal phone procedure if you prefer a different background while you are on the REDFLY.

Note that this default REDFLY screen background *only* appears when your phone is attached to your REDFLY. When you disconnect, your regular Today screen background reappears. By adjusting the screen settings on your phone, you can thus have a similar or a distinct background when on the REDFLY or in standalone mode.

## DISCONNECTING THE REDFLY


When you finish using your REDFLY, disconnect it by removing the USB cable.

# Using the REDFLY

---

## MAKING A CALL

To make a call using the REDFLY:

1. Press the SEND key on the REDFLY  or on your phone. This brings up the keypad onscreen.
2. Use the cursor and touchpad or the keyboard to dial the number. (You can also use Call History, Speed Dial, or your Contacts feature to dial numbers.)
3. Use your handset, Bluetooth headset\*, or the speakerphone option on your phone to talk.

\* Your phone's earpiece and microphone become active when you dial a call on the REDFLY.

When you finish your call, press the END key on your phone or the REDFLY.



## RECEIVING A CALL

When you receive a call while using the REDFLY, your phone's Incoming Call screen appears. To answer the call:

1. Press the SEND key on the REDFLY or on your phone.
2. Use your handset, Bluetooth headset, or speakerphone option to talk.



When you finish your call, press the END key on your phone or the REDFLY.



**Note:** Bluetooth phones and headsets vary widely in their performance particularly when using two such connections simultaneously: one between your phone and a headset and one between your phone and the REDFLY. Doing so may cause poor audio quality or a Bluetooth disconnect.

## PHONE CHARGING

Your REDFLY can recharge your phone if:

- Your phone supports USB charging
- You connect your phone to the REDFLY via USB

While recharging does reduce the REDFLY's battery life, it keeps your smartphone available longer.

# Navigating the REDFLY

---

The REDFLY makes navigating Windows Mobile easy using:

- Keyboard shortcuts
- The ALT-TAB feature to move between applications
- The touch pad and mouse buttons (touchscreen phones)
- The Five-way Navigator (non-touchscreen phones)

## KEYBOARD SHORTCUTS

The REDFLY keyboard includes a variety of shortcuts:



**Home:** Opens your TODAY screen.



**Mail:** Opens Windows Mobile Messaging.



**Web:** Opens Internet Explorer.



**SEND:** Acts like the SEND key on smartphones.



**END:** Acts like the END key on smartphones.



**L MENU:** Activates the current application's left menu or option.



**R MENU:** Activates the current application's right menu or option.



**OK:** Selects an onscreen option, change, or preference like the OK key on your phone.



**Display Brightness:** F9 dims and F10 brightens your REDFLY display.



**External Monitor:** Opens the REDFLY Display menu. You can then select to use an external display or projector or both the REDFLY screen and an external display or projector connected to the VGA port.



**Bluetooth:** This key activates or deactivates the Bluetooth connection to the phone.



**REDFLY:** Displays the REDFLY Settings menu.

## USING THE LEFT AND RIGHT MENU KEYS

The L MENU and R MENU keys activate the left and right menus (or options) respectively for the currently active program.



On some applications, there may be only a single option associated with the L MENU or R MENU, so pressing L MENU or R MENU automatically performs that action. (For example, on the Incoming Call screen, the L MENU button answers the call.)

On other applications, pressing L MENU or R MENU will open a menu with a list of options. You can then highlight the option you want to select it.

Use SEND and END to make or receive calls with the REDFLY  
Making calls with your REDFLY is much like using your smartphone:



1. Press the SEND Key on the REDFLY keyboard or on your phone to display the phone keypad. (You can also use your contact manager to dial the number.)
2. Dial the number using the cursor and the touch pad.
3. Press SEND.

Use your smartphone handset as normal as both the speaker and microphone are active once you press the SEND key.

Press the END Key on the REDFLY keyboard or on the phone to end the call.

Again, receiving calls is much like using your smartphone:

1. The REDFLY will display the Incoming Call screen.
2. Press the SEND Key to start talking on your smartphone.
3. Press the END Key on the REDFLY keyboard or on the phone to end the call.

## USER-DEFINABLE HOT KEYS: HOME, MAIL & WEB

You can define what applications your phone will launch from the REDFLY's Home, Mail, and Web keys using the Hot Keys tab in REDFLY Settings. (These hot key settings are separate from those you may define for your phone's keypad.)

The REDFLY keyboard uses defaults for the three user-definable hot keys:

Hot Key Icon:



*Home*



*Mail*



*Web*

Default Program:

***Today Screen***

***Messaging***

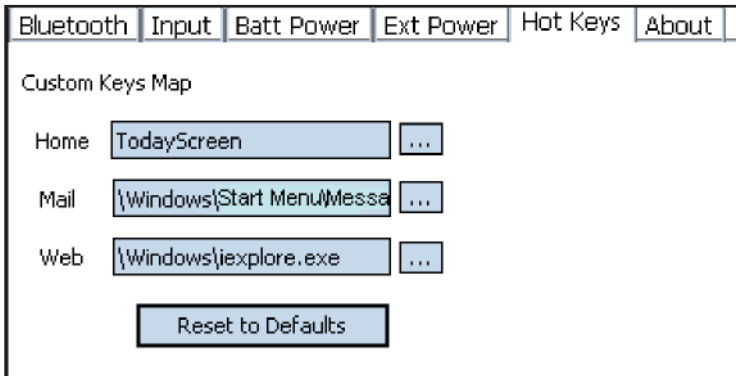
***Internet Explorer***

Press any of these three keys to launch the associated program (or display it if it is already running).

You may want to redefine these keys. For example, you may want to have the Web key launch Opera Mobile as your default browser (rather than Internet Explorer). Or, you may want to use a different mail program or have the Web key launch an RSS newsfeed reader rather than a browser.

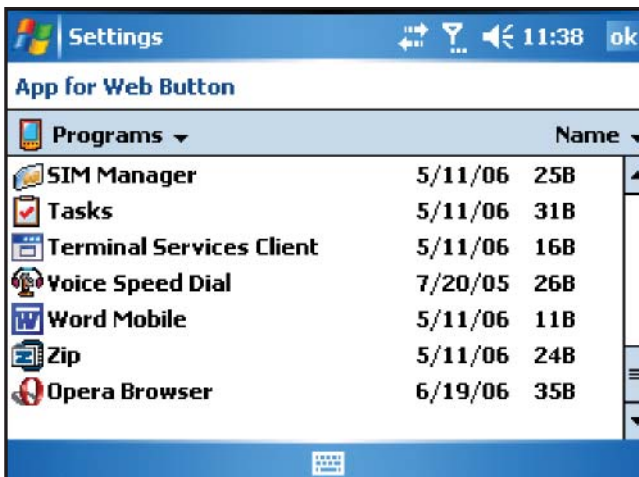
To redefine a hot key:

1. Press the REDFLY key on the REDFLY keyboard. The *Settings* screen appears.
2. Choose the *Hot Keys* tab at the top of the screen:



3. Select the hot key you wish to change and click on the File Explorer button:  next to this key's program path box.

A selection box of applications appears:



4. Use this screen like you would File Explorer to locate the program you want. For example, to map the Web key so it opens the Opera Browser, go to the Programs folder and select *Opera Browser*.
5. After you select the program, the path to that program automatically appears in the program path box in the *Hot Keys* screen.
6. Click **OK** at the top-right of the screen or press the OK button on your keyboard to accept this change.

When you press the redefined Hot Key, the new program will now appear.

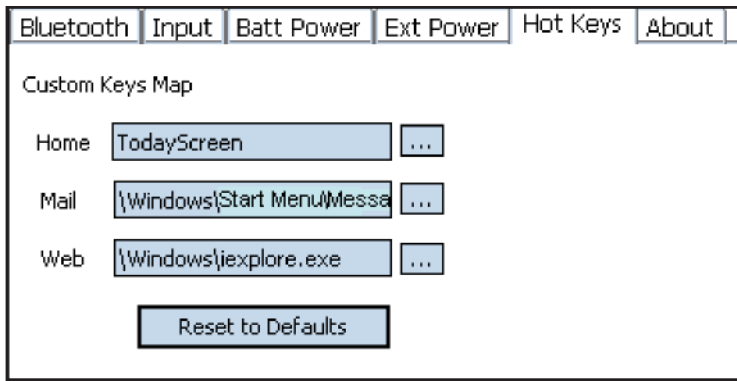
### Checking Program Paths

You may not see the complete path for many programs in the Program Paths box. If you want to read the entire path, including the name of the program you've chosen for a particular hot key, place your cursor into the Program Path box. Use your left and right arrow keys to move your cursor to read the entire path and program name.

### Reset Hot Key Default Programs

If you want to restore the REDFLY Home, Mail, and Web keys to their original settings of the Today Screen, Messaging, and Internet Explorer:

1. Press the REDFLY key on the REDFLY keyboard. The *Settings* screen appears.
2. Choose the *Hot Keys* tab at the top of the screen:

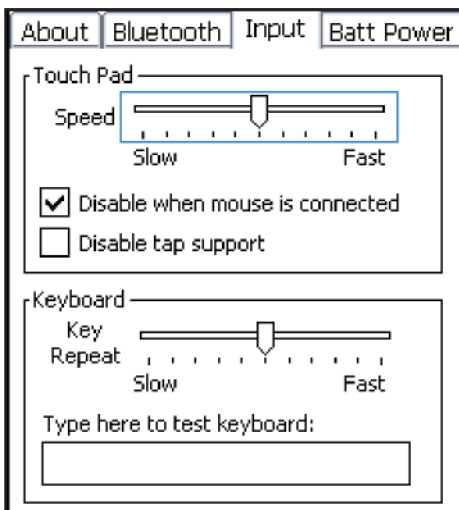


3. Click the Reset to Defaults button at the bottom of the screen.
4. Choose OK at the top right-hand side of the screen, or press OK on the keyboard, to accept this change.

### Keyboard Character Repeat Rate

A character repeats when you press and hold down a key on the keyboard. You can adjust the rate for the number of characters using the Key Repeat Rate setting. To adjust this rate:

1. Press the REDFLY key on the REDFLY keyboard. The *Settings* screen appears.
2. Choose the *Input* tab at the top of the screen:



3. In the *Keyboard* section, move the slider to your desired repeat speed.
4. Test this repeat rate in the small type-in box below the slider. Place your cursor in the box. Press and hold a key on the keyboard to view the repeat rate.
5. Adjust the slider and retest the rate in the box to determine your optimal setting.
6. When you have this setting in the slider, click **OK** at the top right of the screen or press the OK button on the keyboard to accept your changes.

## USING ALT-TAB

The REDFLY software includes the ability to move between open applications by pressing the ALT-TAB keys. When you have two or more applications loaded on your phone, you can now press ALT-TAB to move between the applications (rather than having to choose them through the Start menu).

1. Press both the ALT and TAB keys simultaneously. This displays a dialog of the running applications:



2. Hold the ALT key down while pressing and releasing the TAB key to move through the list of running programs to highlight the program you want.
3. Release the ALT-TAB keys to select that application.

## USING THE TOUCH PAD (TOUCHSCREEN PHONES)

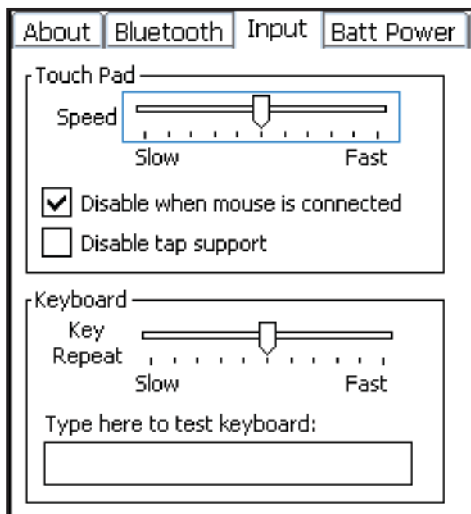
You have the option of adjusting the REDFLY's cursor movement speed, tap feature, and using the Tap-Hold feature with the touch pad.

### *Changing the Cursor Movement Speed*

You can adjust how fast your cursor moves across the screen in response to your finger's movement on the touch pad.

To adjust this speed:

1. Press the REDFLY key on the REDFLY keyboard. The *Settings* screen appears.
2. Choose the *Input* tab at the top of the screen:



5. In the *Touch Pad* section, move the slider to your desired speed—Slow or Fast.
6. Click **OK** at the top right of the screen or press the OK button on your keyboard to accept your change.

Test your new setting with your cursor and touch pad. Repeat as needed to select your preferred speed.

## USING THE LEFT-MOUSE BUTTON/HOLD

You can perform the “Tap and Hold” onscreen action (used to open a submenu in various applications) on your REDFLY with the “Left Mouse Button-Hold” action on the keyboard.

**Note:** Some applications also support using the right mouse button to display sub-menus.

To display an onscreen item sub-menu:

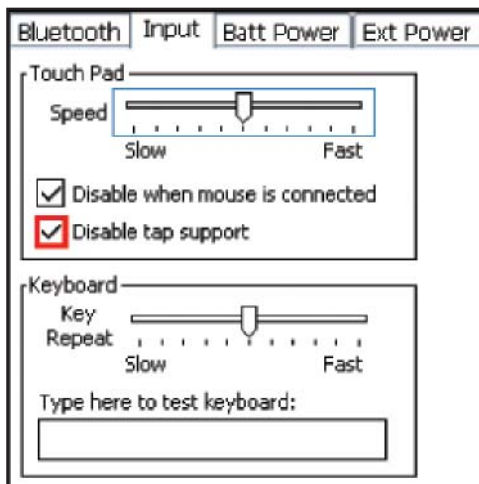
1. Point your cursor at the active link item.
2. Press and hold the left mouse button on your touch pad. The related sub-menu will appear onscreen.
3. Move your cursor to highlight the option you want in this menu and click the left-mouse button. (You can also press the ESC key to close the sub-menu.)

## TOUCH PAD TAP FEATURE

You can tap twice on the REDFLY’s touch pad to activate an onscreen selection—the same as if you double-clicked the left mouse button.

To deactivate this feature:

1. Press the REDFLY key on the REDFLY keyboard. The Settings screen appears.
2. Choose the Input tab at the top of the screen:

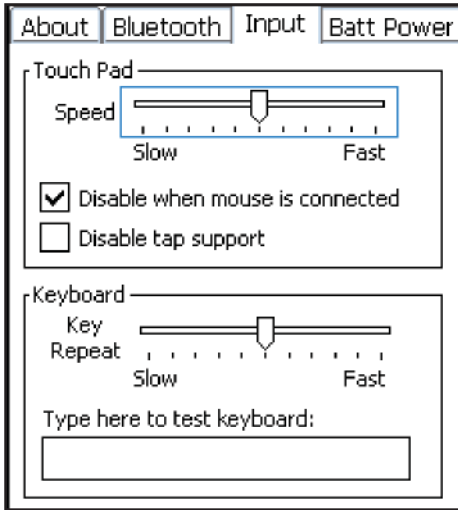


3. In the Touch Pad section, check the box *Disable tap support*.
4. Click **OK** at the top right of the screen or press the OK button on the keyboard to accept your changes.

### Enable the Touch Pad when using an External Mouse

The REDFLY automatically disables its touch pad when you connect an external mouse. You can also enable both the touch pad and the mouse. To do so:

1. Press the REDFLY key on the REDFLY keyboard. The *Settings* screen appears.
2. Select the *Input* tab at the top:



3. Uncheck the box marked *Disable when mouse is connected* in the *Touch Pad* section at the top.
4. Click **OK** at the top right of the screen or press the OK button on the keyboard to accept this change.

The next time you attach a mouse into your REDFLY, the REDFLY will keep the touch pad active along with your mouse.

### FIVE-WAY NAVIGATOR (NON-TOUCHSCREEN PHONES)

Your REDFLY's trackpad and mouse buttons can either act like the five-way navigator on your non-touchscreen smartphone or as they normally would on a PC.

To activate the five-way navigator option:

1. Click both the left and right mouse buttons together simultaneously.



The navigator icon appears in the center of the REDFLY screen.

2. Move your finger left or right, up or down on the trackpad to navigate the onscreen highlight to make your selection. The arrows on the navigator icon will also show which direction you are moving the highlight.
3. Tap once on the trackpad with your finger to accept an option or selection you have highlighted. (This is similar to using the Enter (or center) button on your smartphone navigator.)

To turn off the five-way navigator option:

1. Click both the left and right mouse buttons again simultaneously.
2. The five-way navigator icon will change to the mouse arrow cursor.

### BACK Key Action

Use the REDFLY keyboard's ESC and Back Space keys like the BACK key on your smartphone to go back a screen.

# Working with the Display

## STATUS ICONS

The REDFLY status icons appear in a tray at the bottom-right of the screen (on the same line with the Left and Right Menu options). To open this icon tray, move the cursor to the lower right-hand corner of the screen. The tray will slide out from the right-hand side of the screen:



The icons in the tray include:

<i>REDFLY Tray Icon</i>	<i>Symbol</i>	<i>Description</i>
Caps Lock	Red capital letter "A"	Indicates that "Caps Lock" is ON after pressing the "Caps Lock" key
	Grey lower case "a"	Indicates that "Caps Lock" is OFF after pressing the "Caps Lock" key
Num Lock	Red numeral "1"	Indicates that "Num Lock" is ON after pressing the "Num Lk" key
	Grey numeral "1"	Indicates that "Num Lock" is OFF after pressing the "Num Lk" key
Battery Charging		Appears when the REDFLY AC adapter is plugged in
Battery Fully Charged		Appears when the REDFLY battery is completely charged
Battery 1/2 Charged		Adjusts as the battery discharges to indicate the approximate level of charge remaining
Battery Needs Charging		Appears when the REDFLY battery needs to be charged
No Connection		Appears when the REDFLY is not connected to a phone
USB Connection		Appears when the REDFLY is connected to your phone using USB 1.1 (Full Speed)
USB Hi-Speed Connection		Appears when the REDFLY is connected to your phone using USB 2.0 (Hi-Speed)
Bluetooth Connection		Appears when the REDFLY is connected to your phone using Bluetooth
Bluetooth Signal Strength		Shows the signal strength of the Bluetooth connection to your REDFLY
No Connection		Appears when your REDFLY has no connection to your phone

## ADJUSTING SCREEN BRIGHTNESS

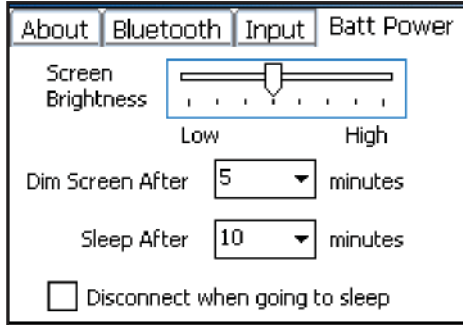
You can use F9 to dim or F10 to brighten your REDFLY display.



You can also set the default display brightness on either or both Battery Power and External Power.

### Battery Power

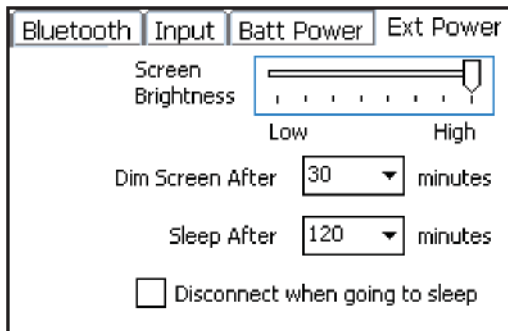
1. Press the REDFLY key on the REDFLY keyboard. The *Settings* screen appears.
2. Choose the *Batt Power* tab at the top of the screen:



3. Use the slider marked *Screen Brightness* to set the default brightness level for your display when you are running on battery power. (If you are on battery power, your display will brighten or dim as you move the slider.)
4. Click **OK** at the top right of the screen or press the OK button on your keyboard to accept the change.

### External Power

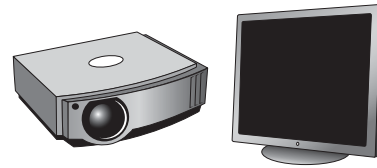
1. Press the REDFLY key on the REDFLY keyboard. The *Settings* screen appears.
2. Choose the *Ext Power* tab at the top of the screen:



3. Use the slider marked *Screen Brightness* to set the default brightness level for your display when you are running on external power. (If you are on external power, your display will brighten or dim as you move the slider.)
4. Click **OK** at the top right of the screen or press the OK button on your keyboard to accept the change.

## USING AN EXTERNAL DISPLAY OR PROJECTOR

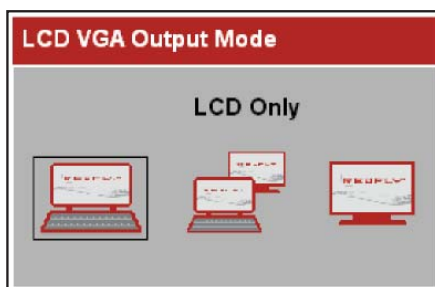
Your REDFLY includes a standard VGA port at the rear of the device for connecting an external monitor or projector.



**Note:** The REDFLY supports a maximum video output resolution of 800 x 480 (WVGA). A black band will appear at the bottom of the image to fit 800x600 monitors.

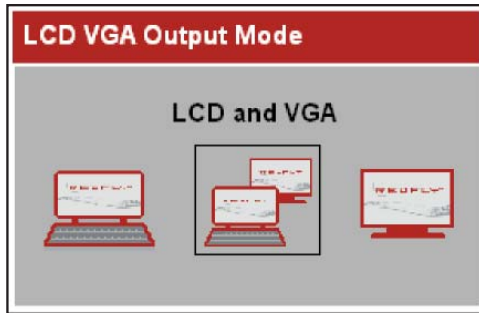
To use an external display or projector:

1. Connect the projector or display's VGA cable to the REDFLY's VGA port.
2. Power on the projector or display.
3. Press the REDFLY's F11/External Display key. The *REDFLY Display* menu appears:

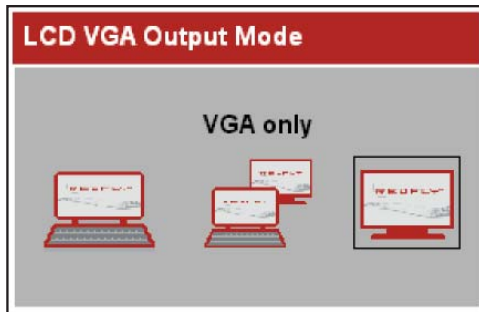


When you press the F11/External Display key once your screen *only* appears on the REDFLY's internal LCD display.

Press the F11/External Display key twice to move the indicator to *LCD and VGA* output. This will show your screen on *both* the REDFLY and the external display:



Press the F11/External Display key three times to move the indicator to *VGA Only* output. This will show your screen on the external display only:



### ***Disconnecting from an External Display***

When you are finished using the external display:

1. Press the REDFLY's F11/External Display key to select the LCD Only option in the Display menu. This will return your screen back to your REDFLY display.
2. Disconnect the external display or projector's VGA cable from the REDFLY.

## **PLAYING VIDEO**

The REDFLY can support video playback. However, video playback is highly dependent on your phone's processor, available memory, the type of Internet connection, as well as the type of connection between your phone and your REDFLY. This may mean that a video may be slow, intermittent, or not play at all. Any audio track will come from your phone's speaker, headphone jack or headphones connected via Bluetooth to your phone.

*Note that the default Windows Mobile Media Player software does not support:*

1. *Some video formats natively including Flash video and Apple's QuickTime.*
2. *Increasing the video playback size on the REDFLY screen.*

# Using External Devices

The REDFLY supports up to five external drives on either or both of the two powered USB 2.0 ports and using USB hubs.

**Note:** *If you want to use both ports for external devices, set up the REDFLY to connect to your phone via Bluetooth.*

## USING A THUMB/FLASH DRIVE

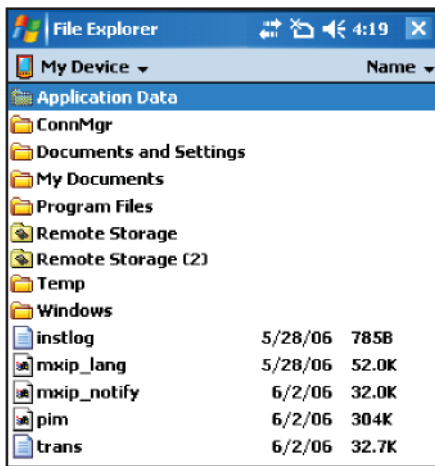
Connect a USB drive into an available port on the REDFLY. This external drive will appear in the Windows Mobile File Explorer as “Remote Storage” or similar description.

If you already have an SD or CF card in your phone, it may be listed as “Remote Storage” already. In that case, when you plug in the external drive into the REDFLY, File Explorer will list this second drive with the number “2” after it—as in “Remote Storage (2)”. If you plug in a third drive into the REDFLY, it will appear as “Remote Storage (3)”, and so on.

However, if the USB device requires additional software or drivers to run, such as a CD or DVD drive, Windows Mobile will not recognize it. (Check with the device vendor to see if there is a Windows Mobile version of their software or driver to support the device.)

To access a USB drive on the REDFLY:

1. Open File Explorer on your phone.
2. Select *My Device* in File Explorer to see the list of folders and any “Remote Storage” external device(s):



3. Select your particular external device to view its contents.

## Using External Drives with Bluetooth

If you have external drives attached to your REDFLY when you activate the Bluetooth connection, the REDFLY will disable those drives. You will need to disconnect and reconnect these drives to the REDFLY to have them appear in the File Explorer list.

**WARNING:** *Use caution with external drives if you are on a Bluetooth connection between your REDFLY and your smartphone. As with any external drive on PCs, if you lose your connection with the device while an application is writing to the drive, it can corrupt the drive or cause the loss of data on that drive. Do NOT save documents to the drive when it is likely to go out of range of the phone.*

## USING AN EXTERNAL MOUSE

The REDFLY also supports using a wired or wireless mouse via the USB port. Simply plug in the USB connector from the mouse into the REDFLY.

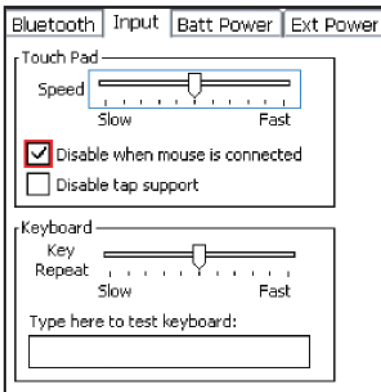
**NOTE:** The ability to use the scroll wheel is application-dependent.

### Enable the Touch Pad when using an External Mouse

If you attach an external mouse, you may want to enable the REDFLY's touch pad. (The REDFLY automatically disables the touch pad when you connect the external mouse by default.)

To enable the touch pad:

1. Press the REDFLY key on the REDFLY keyboard. The *Settings* screen appears.
2. Select the *Input* tab at the top of the screen:



3. Uncheck the box marked *Disable when mouse is connected* in the *Touch Pad* section at the top.
4. Click *OK* at the top right of the screen or press the *OK* button on the keyboard to accept this change.

The next time you attach a mouse into your REDFLY, the REDFLY will enable both the touch pad and your mouse.

# Using Bluetooth

Connecting to the REDFLY using Bluetooth gives you greater flexibility in working with your mobile companion. For example, you can leave your phone in its case while you use the REDFLY.

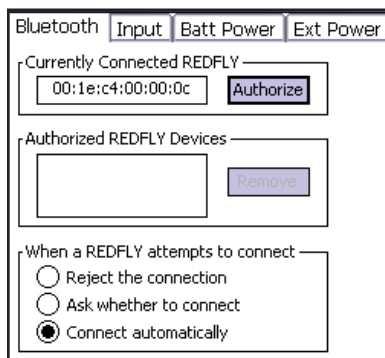
**Note:** As with most Class 2 Bluetooth devices, the maximum designed range for connections is 30 feet. Walls, partitions or other obstructions may significantly reduce this range.

Also, Bluetooth phones and headsets vary widely in their performance particularly when using two such connections simultaneously: one between your phone and a headset and one between your phone and the REDFLY. Doing so may cause poor audio quality or a Bluetooth disconnect.

## SETTING UP BLUETOOTH FOR THE FIRST TIME “PAIRING”

1. Activate your phone’s Bluetooth connection. (Refer to your phone’s manual for details.)
2. On non-touchscreen phones, enable Bluetooth Discovery. (Some phones call this “make this device discoverable”.)
3. Connect your REDFLY to your smartphone using the USB cable.
4. Press the REDFLY key on the REDFLY keyboard. The *Settings* screen appears.
5. Select the *Bluetooth* tab at the top of the *REDFLY* Settings screen.

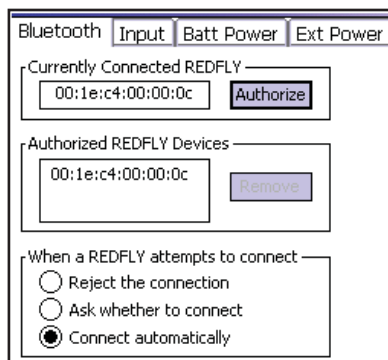
The Bluetooth address of your REDFLY appears in the *Currently Connected REDFLY* address box:



6. Click the *Authorize* button.

**Note:** If your phone’s Bluetooth feature is not active, an error message will appear. Activate Bluetooth on your phone then return to this screen to authorize your REDFLY.

7. Your REDFLY’s address now appears in the Authorized list:



8. Accept the default security setting under *When a REDFLY attempts to connect*. You can also review these settings in Bluetooth Connection Security Options below.
9. Click **OK** in the upper right hand corner of the screen (or press the OK button on the keyboard) to close the REDFLY Settings window and accept the changes.

10. Press the BLUETOOTH/F12 key on the REDFLY keyboard.



The REDFLY will stop USB and start the Bluetooth connection. The REDFLY System Tray will also display a Bluetooth signal strength meter.



You can now disconnect the USB cable and work using Bluetooth.

### Connecting with BLUETOOTH

Once you have “paired” your smartphone and REDFLY over Bluetooth, connecting wirelessly the next time is almost automatic.

1. Power on your smartphone and activate Bluetooth.
2. Power on the REDFLY.
3. Press the Bluetooth/F12 key.



The REDFLY will connect to your phone via Bluetooth. Your phone will switch the display and keyboard functions to the REDFLY.

**Caution:** The REDFLY supports USB drives on its external ports. Be careful when saving data to an external USB drive while on Bluetooth. If you move out of the range of the Bluetooth signal with the REDFLY, you may lose your connection to your phone. If your phone is saving data to that USB drive, this disconnect could result in the loss of data or a corrupted USB drive.

### Disconnecting with Bluetooth

Press the Bluetooth/F12 key once to disconnect your REDFLY from your phone.

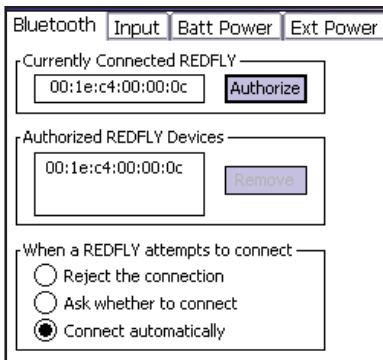
## BLUETOOTH CONNECTION SECURITY OPTIONS

You can choose how your smartphone reacts to a request from your REDFLY to connect over Bluetooth. These options support your preference for the security level of your connection. Your phone can:

- Reject the connection
- Ask whether to connect
- Connect Automatically (*the Default*)

To choose your preferred level of Bluetooth security:

1. Press the REDFLY key on the REDFLY keyboard. The *Settings* screen appears.
2. Select the *Bluetooth* tab at the top of the screen:



The Bluetooth Security options appear in the box labeled *When a REDFLY attempts to connect* at the bottom of the screen.

**Note:** The option you choose in this Security list applies to any REDFLY that is authorized for this particular phone. Remember, since these settings reside on the phone and not on the REDFLY, each phone can have its own individual settings. Other smartphones authorized to use this REDFLY could connect using a different security level based on their individual settings.

### Reject the connection

This option causes your phone to automatically reject the REDFLY's Bluetooth connection request. You would use this option, for example, when you temporarily want to keep your smartphone from interruptions due to REDFLY Bluetooth requests.

Selecting *Reject the connection* is the same as if you removed all of the addresses from the Authorized REDFLY Devices list. This *Reject the connection* option however provides you with a way to put a *temporary* stop to Bluetooth connections from REDFLY devices. If you want to stop Bluetooth connections from one or more REDFLYs *permanently*, you would remove those REDFLY addresses from the Authorized List.

### Ask whether to connect

This option requires a confirmation on your phone to complete the connection. For example, if you select Ask whether to connect, and you press the Bluetooth/F12 key on your REDFLY, you will see this message on your phone:



Tap or select *Yes* to accept the REDFLY's Bluetooth connection to your phone.

The *Ask whether to connect* option provides a greater level of security than *Connect Automatically* since it requires this confirmation on the phone to make the connection.

### Connect Automatically (the Default)

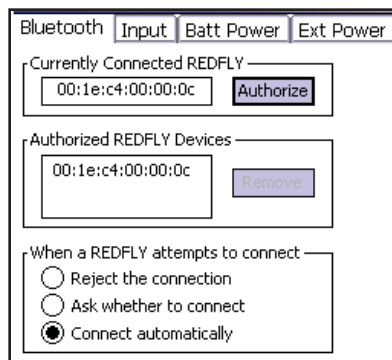
This is the simplest method for connecting to the REDFLY over Bluetooth. With this option checked, when you press the REDFLY's Bluetooth/F12 key, the REDFLY automatically links up with your phone and transfers the display and keyboard functions over to the REDFLY.

## USING TWO OR MORE PHONES WITH BLUETOOTH

You can authorize a REDFLY to connect via Bluetooth with any number of smartphones (such as might be the case with using a shared REDFLY in an office).

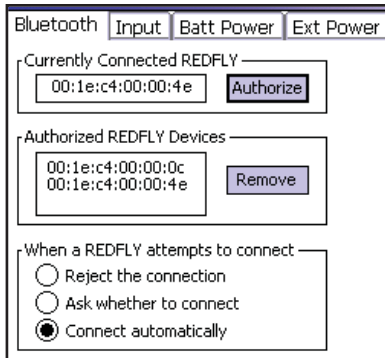
To authorize a REDFLY on a second or on multiple phones:

1. Activate the second phone's Bluetooth connection.
2. Connect your REDFLY to the second smartphone using its USB cable.
3. Press the REDFLY key on the REDFLY keyboard. The *Settings* screen appears.
4. Select the *Bluetooth* tab at the top of the screen.



The Bluetooth address of this new REDFLY appears in the Currently Connected REDFLY address box.

5. Click **Authorize**.
6. This second REDFLY's address now appears in the Authorized List:



7. Accept the default security setting in *When a REDFLY attempts to connect* or review these settings in the *Bluetooth Connection Security Options* section above.
8. Click **OK** box in the upper right hand corner of the screen (or press the OK button on the keyboard) to close the *REDFLY Settings* window.

Repeat this steps on each phone you wish to authorize connections for to this REDFLY.

## MULTIPLE PHONES ACTIVE WITH BLUETOOTH

The Bluetooth Connection list appears if you:

- Authorize a REDFLY on multiple phones using Bluetooth
- Press the Bluetooth/F12 key in an area where two or more of these phones have Bluetooth active (and each phone has this REDFLY in its Authorized List)

This REDFLY will show a list of these phones so you can select which you want to connect to:



1. Highlight the name of the phone you want to connect to.
2. Click **Connect** button or press Enter.

The REDFLY will connect to this phone via Bluetooth.

**Note:** Some phones may not be available even though their names appear in the list. This list shows names for all phones this REDFLY is authorized on.

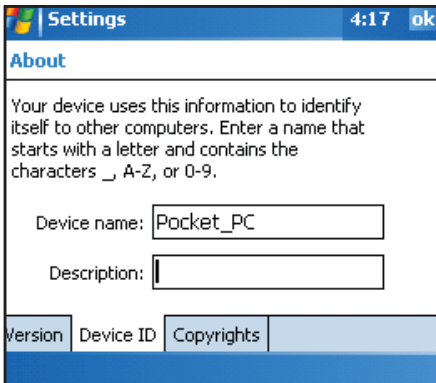
### What is My Phone's Name?

This multiple Bluetooth phone list shows each phone by name. If you don't know your phone's name, or want to create a unique one, you can view or set your phone's name following these steps:

#### Touchscreen Phones

1. Select the Start/Settings screen.
2. Click on the *System* tab at the bottom of the screen.
3. Choose *About* in the screen.
4. Click on the *Device ID* tab at the bottom of the screen.

The *About* screen appears. Your phone's current name is in the *Device Name* box:



You can change your phone's name ("Device ID" or "Device Name") by typing in a new name into the box and choosing **OK** at the top right of the screen or pressing OK on the keyboard.

#### Non-Touchscreen Phones

1. Choose Start/Settings.
2. Select *Connections*.
3. Select *Bluetooth*.

Your phone's name will appear under Device Name.

4. Select your phone's name to edit it.

Select *Done* when you are finished to save the name.

### Refreshing the Bluetooth List

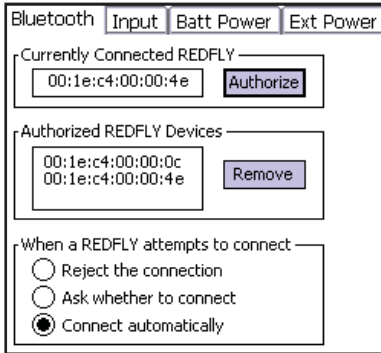
The *Bluetooth Connection* phone list can become cluttered with various phones over time. To remove a phone from the list, highlight the name of the phone and choose **Delete** at the bottom of the screen.

## REMOVING AN AUTHORIZED REDFLY

You may want to remove a particular REDFLY from your Bluetooth Authorized list. (This might occur when you acquire your own personal REDFLY after using a shared one.)

To remove a REDFLY from the Authorized List:

1. Use USB to connect to the REDFLY you want to remove from your list.
2. Press the REDFLY key on the REDFLY keyboard. The Settings screen appears.
3. Select the Bluetooth Tab:



4. In the Authorized REDFLY Devices list, use your arrow key or mouse to highlight the REDFLY device address that matches the one in the Currently Connected REDFLY list.
5. Click **REMOVE**.
6. Click **OK** in the upper-right corner or press the OK key on the keyboard to accept this change.

If you want to restore this REDFLY to the Authorized list, you need to follow the steps outlined in the section *Setting Up Bluetooth for the First Time*.

## DISCONNECTING AUTOMATICALLY

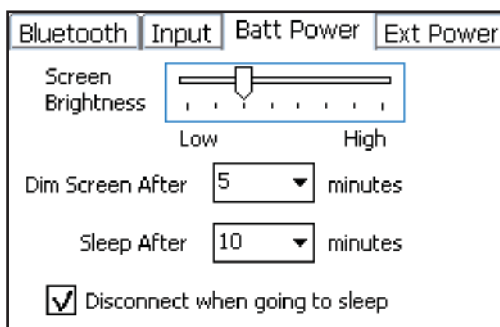
Your phone will automatically disconnect from your REDFLY when the REDFLY goes to sleep if you are on battery power. (This occurs after 10 minutes of inactivity when on battery power.) This will stop the Bluetooth connection drain on your REDFLY battery.

The REDFLY does *not* automatically disconnect from your phone when the REDFLY is on external power and enters Sleep Mode.

### **Battery Power**

To change the default:

1. Press the REDFLY key on the REDFLY keyboard. The *Settings* screen appears.
2. Choose the *Batt Power* tab at the top of the screen:



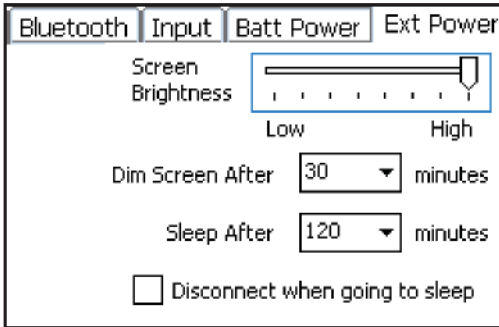
4. Uncheck the box marked *Disconnect when going to sleep*.
5. Click **OK** at the top right of the screen or press the OK button on your keyboard to accept the change.

The next time your REDFLY enters Sleep Mode, it will remain connected to your phone.

### External Power

You can have your REDFLY automatically disconnect from your phone when your REDFLY is plugged into the AC adapter and enters Sleep Mode. To adjust this setting:

1. Press the REDFLY key on the REDFLY keyboard. The *Settings* screen appears.
2. Choose the *Ext Power* tab at the top of the screen:



3. Check the box marked *Disconnect when going to sleep*.
4. Click **OK** at the top right of the screen or press the OK button on your keyboard to accept the change.

Your phone will now automatically disconnect from the REDFLY the next time your REDFLY enters Sleep Mode while plugged in to the adapter. You will need to press the Bluetooth/F12 key to reestablish the connection.

### Reconnecting the REDFLY

To reconnect if your phone disconnects from the REDFLY:

1. Disconnect and reconnect the USB cable.  
OR
2. Press the Bluetooth/F12 key to reestablish a Bluetooth connection.



# Power-Saving Options

The REDFLY has three options for extending the battery life of your REDFLY:

- Display Dimming
- Sleep Mode
- Auto Disconnect

## DISPLAY DIMMING

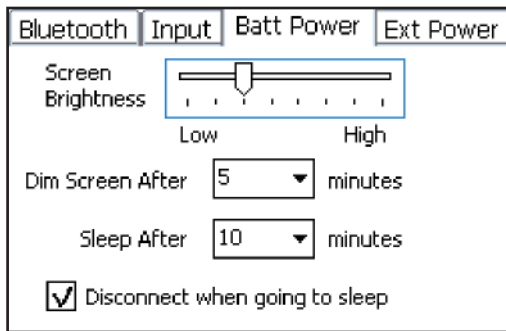
The REDFLY display uses the most power. To extend battery life, the REDFLY automatically dims the screen to its lowest setting after a period of inactivity (five minutes is the default).

**Note:** The REDFLY will also dim the screen to its lowest setting when it is time to recharge the battery. In that case, the Charge Battery icon will also appear in the REDFLY System Tray.

### Battery Power

To adjust the length of time before the REDFLY automatically dims the screen when on battery power:

1. Press the REDFLY key on the keyboard. The *Settings* screen appears.
2. Choose the *Batt Power* tab at the top of the screen:

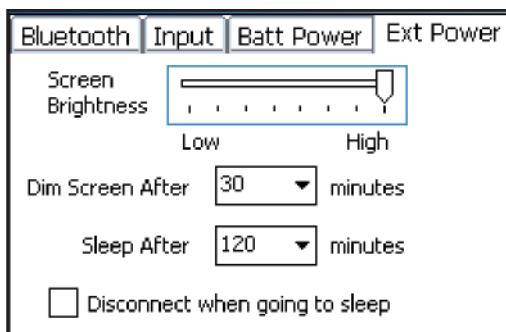


3. In the box marked *Dim Screen After*, select 1, 3, or 5 minutes from the drop-down box. (The option "Never" turns off Automatic Dimming.) You can also type in any value from 1 to 1000 minutes in the box.
4. Click **OK** at the top right of the screen or press the OK button on your keyboard to accept the change.

### External Power

The default for automatically dimming the REDFLY screen when plugged into the AC adapter is 30 minutes. To adjust this time:

1. Press the REDFLY key on the REDFLY keyboard. The *Settings* screen appears.
2. Choose the *Ext Power* tab at the top of the screen:



3. In the box marked *Dim Screen After*, select 10, 20, or 30 minutes from the drop-down box. (The option "Never" turns off Automatic Dimming.) You can also type in any value from 1 to 1000 minutes in the box.
4. Click **OK** at the top right of the screen or press the OK button on your keyboard to accept the change.

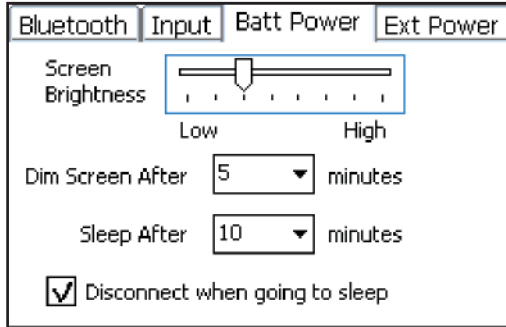
## SLEEP MODE

The REDFLY also supports Sleep Mode—the display will go dark and the power LED on the right side of the unit will flash.

### Battery Power

The default is to automatically enter Sleep Mode after 10 minutes of inactivity when on battery power. To adjust this time:

1. Press the REDFLY key on the REDFLY keyboard. The *Settings* screen appears.
2. Choose the *Batt Power* tab at the top of the screen:

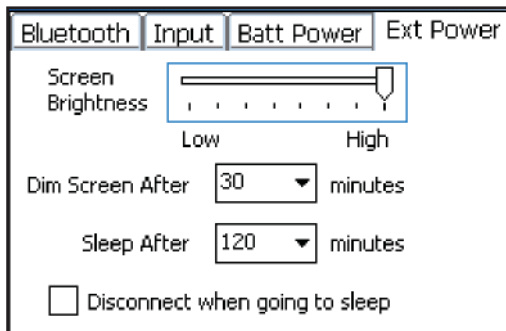


3. In the box marked *Sleep After*, select 10, 20, or 30 minutes from the drop-down box. (There's also the option of "Never" which turns off Sleep Mode.) You can also type in any value from 1 to 1000 minutes in the box.
4. Click **OK** at the top right of the screen or press the OK button on your keyboard to accept the change.

### External Power

The default on External Power is for the REDFLY to go into Sleep Mode after 120 minutes of inactivity. To adjust this time:

1. Press the REDFLY key on the REDFLY keyboard. The *Settings* screen appears.
2. Choose the *Ext Power* tab at the top of the screen:



3. In the box marked *Dim Screen After*, select 30, 60, or 120 minutes from the drop-down box. (The option "Never" turns off Automatic Dimming.) You can also type in any value from 1 to 1000 minutes in the box.
4. Click **OK** at the top right of the screen or press the OK button on your keyboard to accept the change.

## DISCONNECT WHEN GOING TO SLEEP

Your REDFLY will charge your phone if your phone supports USB charging and you connect to the REDFLY using USB. The benefit is that your phone will be fully charged (or as fully charged as the REDFLY's own battery status allows). However, this is a drain on your REDFLY battery. (This feature cannot be turned off while working over USB.)

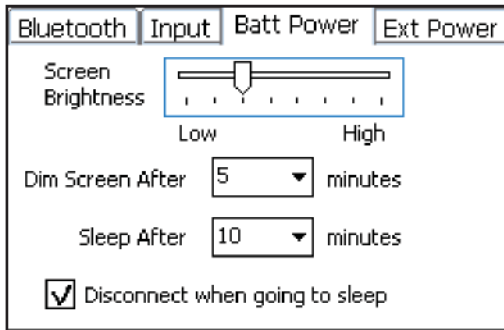
However, if your REDFLY is on battery power and enters Sleep Mode, by default it will automatically disconnect from your phone. This will stop the drain on your REDFLY battery in recharging your phone.

If you are on a Bluetooth connection, the *Disconnect when going to sleep* feature also improves battery life by turning off that connection when the REDFLY enters Sleep Mode.

### Battery Power

If you want to change this default while on battery power:

1. Press the REDFLY key on the REDFLY keyboard. The Settings screen appears.
2. Choose the Batt Power tab at the top of the screen:



3. Uncheck the box marked *Disconnect when going to sleep*.
4. Click **OK** at the top right of the screen or press the OK button on your keyboard to accept the change.

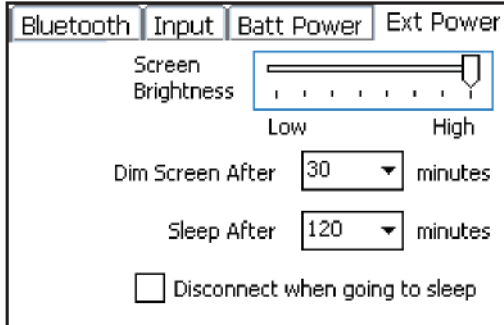
The next time your REDFLY enters Sleep Mode, it will remain connected and continue charging your phone.

### External Power

This same *Disconnect when going to sleep* option is available in the *Ext Power* settings tab as well. However, when your REDFLY is on external power, the option to automatically disconnect from the REDFLY is a convenience rather than a power-saving measure. The default is to leave your phone connected while on external power.

To change the default:

1. Press the REDFLY key on the REDFLY keyboard. The *Settings* screen appears.
2. Choose the *Ext Power* tab at the top of the screen:



3. Check the box marked *Disconnect when going to sleep*.
4. Click **OK** at the top right of the screen or press the OK button on your keyboard to accept the change.

The next time your REDFLY enters Sleep Mode and is on external power, it will automatically disconnect from your phone.

### Reconnecting the REDFLY

To reconnect if your phone disconnects from the REDFLY:

1. Disconnect and reconnect the USB cable.  
OR
2. Press the Bluetooth/F12 key to reestablish a Bluetooth connection.



# Uninstalling REDFLY Software

---

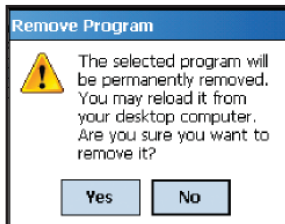
You can remove the REDFLY software and drivers from your smartphone using the Remove Programs function in Windows Mobile.

## TOUCHSCREEN

1. Select the Start/Settings screen.
2. Select the *System* tab at the bottom of the screen.
3. Select *Remove Programs*.
4. Select "Celio Corporation REDFLY" from the list:



5. Click **Remove**.
6. Choose **YES** to confirm the deletion:



Windows Mobile will remove the REDFLY software.

## NON-TOUCHSCREEN

1. Select Start/Settings/Remove Programs
2. Select "Celio Corporation RedFly" from the list.
3. Choose *YES* to confirm the removal.

Windows Mobile will remove the REDFLY software.

**Note:** If your REDFLY is connected to your phone when you run the REMOVE process, it will automatically be disconnected as part of the software removal.

### **PC Software Removal**

If you performed your REDFLY install using your PC, you can also remove the REDFLY Setup software that may reside there.

1. Launch the Windows Add/Remove Programs function.
2. Highlight the REDFLY software.
3. Choose **Remove**.

If you need to restore the REDFLY software, repeat the steps in the *Installing the REDFLY Software* section.

# Troubleshooting

---

These represent a few of the common strategies for working with the REDFLY. For more information, please see our FAQs at <http://www.celiocorp.com/support> for the latest tips.

## ***I tried visiting certain websites with my browser on the REDFLY, but I couldn't view them.***

Support varies in Windows Mobile browsers to view all websites. In particular, web pages that use Java (Java applets or Java Virtual Machine), Flash, Shockwave, VBScript, WML script, and other plug-ins, may not display in a Windows Mobile browser.

## ***I do not see suggested e-mail addresses in Messaging as I type in an address.***

For optimal typing performance, the REDFLY software turns off the Word Completion function on your phone when you connect to a REDFLY. (The REDFLY keyboard allows you to enter text much faster than the Word Completion function expects.) It reactivates Word Completion when you disconnect.

You can reset this option while you are using the REDFLY if you wish to view suggested e-mail addresses. However, this may reduce performance while entering text with the keyboard.

To reactivate Word Completion while connected to the REDFLY:

### *Touchscreen Phones*

1. Open the Start/Settings screen.
2. Select *Input*.
3. Select the *Word Completion* tab at the bottom of the screen.
4. Check the box marked *Suggest words when entering text*.
5. Click **OK** at the top right of the screen or press OK on your keyboard to accept this change.

### *Non-Touchscreen Phones*

Word Completion is available through the T9 Mode on non-touchscreen phones. When you are in an application where you can type in text:

1. Press and hold the \*T9 key to see the *T9 Settings* menu.
2. Select *T9 Settings*.
3. Select *Preferences*.
4. Check the box labeled *Word Completion*.

Select Done to save your change.

This only reactivates Word Completion for the current session with the REDFLY. When you disconnect and reconnect the REDFLY, Word Completion will again be deactivated for optimal typing performance.

## ***I tried installing the REDFLY software on my Motorola Q, but the phone did not reset after I ran the setup program.***

Some Motorola Q phones do not automatically reset if they are connected either to USB or to the AC adapter. Simply press the phone's On switch to activate the phone and complete the install.

## ***I have erratic performance viewing video on my REDFLY.***

Video playback is highly dependent on your phone's processor power, available memory, the type of data connection you have to the Internet, as well as the type of connection you have between your phone and your REDFLY. The default Windows Mobile Media Player also does not natively support some types of video and audio files. Video playback then may occur, but it may not be steady or may run with glitches, or not at all.



***I have erratic performance with my Bluetooth headset on the REDFLY.***

Bluetooth phones and headsets vary widely in their performance particularly when using two such connections simultaneously: one between your phone and a headset and one between your phone and the REDFLY. With some phones and headsets, doing so may cause poor audio quality or a Bluetooth disconnect.

***I have attached an external mouse, but I cannot scroll with it.***

While Windows Mobile itself supports scrolling, there are a limited number of applications that do. In the same way, the right-mouse button has limited support on smartphones.

***I tried running the Bubble Breaker game from the REDFLY, but the image isn't right.***

Some games, such as Bubble Breaker, currently aren't supported on the REDFLY. Some may work if the game is launched prior to connecting to the REDFLY, others won't. These issues will be corrected in future releases.

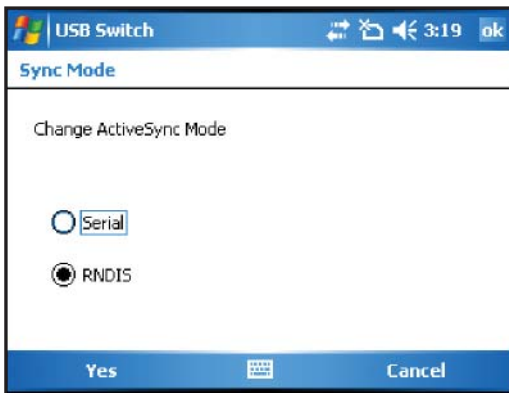
***I tried connecting via Bluetooth, and the REDFLY says, "No device found".***

Check to see that you have Bluetooth activated on your smartphone. Also check to see that your REDFLY is authorized with your phone using the procedure under Setting up Bluetooth.

***When I connect to the REDFLY using USB, the REDFLY displays an error message.***

Some phones don't automatically set the appropriate type of network connection for the REDFLY. To fix this:

1. Go to your smartphone's Start/Settings screen (on some phones go to the Start/Programs screen).
2. Choose *Connections* (on some phones, choose *Accessory*).
3. Choose *USB to PC* (on some phones, choose *USB Switch*).
4. Make sure that the box *Enable advanced network functionality* or *Enable RNDIS* is checked:



If not, mark the box and click **OK** or choose **Yes** to accept the change.

***When I run certain applications, the message appears "The REDFLY disconnected because the phone is too low on memory."***

Applications vary in their demand for memory. If an application requires more memory than is available on your phone with the REDFLY connected, the REDFLY will automatically disconnect to allow you to keep working.

***I need to do a network install of the REDFLY software.***

See the Network Install section at <http://www.celiocorp.com/support> for details on how to perform this setup.

***I sometimes find different, unexpected, or no characters appear when typing on the REDFLY keyboard.***

Smartphones vary in how they map their keys to fully utilize their individual handset keypads. For example, many do not support the FN (Function) key for other than navigating. Others use different mappings for data entry keys or the decimal point. These variations may also occur even between applications on the same phone. You should acquaint yourself with your specific phone's behavior as part of improving productivity with the REDFLY.

***My screen suddenly dimmed to its lowest setting while I was working on the REDFLY.***

This is a power-saving feature that activates when your REDFLY battery needs charging. At the same time, the REDFLY System Tray will pop out of the right side of the screen and display the blinking Charge Battery icon. Plug in your REDFLY AC adapter and your screen will return to its original brightness setting.

***If I have the REDFLY Settings screen open, I can't switch to my TODAY screen.***

Windows Mobile treats the Settings screen as if it were the TODAY screen. Simply complete your tasks in Settings then close it. You can then navigate to your phone's TODAY screen.

***My REDFLY fails to connect to my phone when I use Bluetooth and my phone is asleep. I set my REDFLY Bluetooth settings to "Ask to Connect" and my phone to require a password when it wakes from Sleep Mode.***

Some phones do not allow a Bluetooth request to display the *Enter Password* screen on the REDFLY. You will need to go to your phone and provide the wake-up password before connecting to the REDFLY over Bluetooth. Alternately, you can open the REDFLY Settings screen and reset Bluetooth to "Connect Automatically". You can also remove the need for a password on the phone when it wakes from Sleep Mode.

***Why do I see a different Today screen background after I installed the REDFLY software on my non-touchscreen smartphone?***

The REDFLY installs a new default Today screen background on non-touchscreen smartphones. (This background includes a REDFLY theme and has the REDFLY logo in the lower-right corner.) This enhancement also takes full advantage of the larger screen size on the REDFLY which some standard smartphone backgrounds do not. You can change this background using your normal phone procedure if you prefer a different background while you are on the REDFLY.

Note that this default REDFLY screen background *only* appears when your phone is attached to your REDFLY. When you disconnect, your regular Today screen background reappears. By adjusting the screen settings on your phone, you can thus have a similar or a distinct background when on the REDFLY or in standalone mode.

# Cleaning the REDFLY

---

If you need to clean the REDFLY—display or keyboard—please turn off the REDFLY and unplug any cables. Dampen a clean, soft, lint-free cloth only with water to remove any spots. DO NOT USE any spray cleaners—window cleaner, household spray, alcohol, or abrasive cleanser—on the REDFLY.

## Customer Service

---

We want you to gain the most from your REDFLY. Please don't hesitate to contact Celio by:

Phone: 1-888-4REDFLY (1-888-473-3359)

E-mail: [support@celiocorp.com](mailto:support@celiocorp.com)

to ask any questions you may have about using your REDFLY or to help resolve any issues you might encounter.

You will also find a valuable FAQ online with additional suggestions and tips about using your REDFLY at [www.celiorcorp.com/support](http://www.celiorcorp.com/support).

### REDFLY VERSION INFORMATION

You will need the REDFLY version information when you work with customer service.

To view your REDFLY information:

1. Press the REDFLY key on the REDFLY keyboard.
2. Choose the About tab.

## Warranty

---

Celio Corp. warrants your REDFLY for a period of 90 days from purchase against defects in materials and workmanship under normal use by the original purchaser. If a hardware defect occurs and Celio Corp. receives a valid claim within the 90 days, at its option and to the extent allowed by law, Celio Corp. will either (1) repair the hardware defect at no charge, using new or refurbished parts, or (2) exchange the REDFLY with a new one or which has been manufactured from new and/or serviceable used parts and which is at least functionally equivalent to the original product.

To return a REDFLY for service, please e-mail [support@celiocorp.com](mailto:support@celiocorp.com) for an RMA number.

# Specifications

---

Display (Internal)	800x480
VGA Port	800x480 WVGA maximum resolution
USB Ports	2x2.0 powered (500mA maximum)
Bluetooth	Compatible with Bluetooth 1.0 and 2.0. 30 feet (10 meters) maximum range, 1Mbps maximum throughput
Weight	2 lbs (2 lbs 4 oz. with adapter) .9 Kilograms (1.1 kilograms (1.02Kg. with adapter)
Battery	7.4V, 4500mAh, Lithium Polymer Battery (8 hours average life)
OS Support	Selected Windows Mobile phones—visit <a href="http://www.celiocorp.com/smartphone">http://www.celiocorp.com/smartphone</a> for a current list of supported phones
Operating Temperature	32 – 104 degrees F (0 – 40 degrees C)
Charger	9VDC 2.5A LiPo-compatible. Avg. 3 hours to fully charge the battery

# Using the REDFLY Safely

---

Please read all the safety information in this guide before using the REDFLY to avoid injury. For updates to this information, please see our website at <http://www.celiocorp.com/>.

**WARNING:** Failure to follow these safety instructions could result in fire, electric shock, or other injury or damage.

## **PROPER CARE OF THE REDFLY**

Do not take the REDFLY apart (there are no user-serviceable parts inside). Do not bend, twist, or otherwise deform the REDFLY. Don't drop it. In particular, the REDFLY's LCD display is glass, which could break or shatter if it suffers an impact.

Do not get the REDFLY wet or spill liquids or food on it. If something like this should happen, let it air dry—don't try to microwave it or use a blow dryer on it. Contact us for the proper procedure to restore your REDFLY after a fall or getting it wet.

Don't force connectors into the REDFLY ports. Connectors should work easily. If the connector seems to need additional pressure, it may be an incorrect connector for that port or a deformed connector.

## **ADAPTER SAFETY**

Use only the included AC power adapter with your REDFLY. **DO NOT USE** your cellphone AC adapter to charge the REDFLY. The REDFLY uses a long-lasting Lithium-Polymer battery that requires a specific adapter for LiPo recharging. Otherwise, there is a risk of damage or catastrophic failure of the battery. Do not use the adapter if the cord becomes frayed or broken. Contact Celio for a replacement.

## **USB CONNECTING CABLE SAFETY**

Only use the appropriate connecting cable designed for your cellphone to connect to the REDFLY. In particular if your cellphone supports charging via USB. Again, do not use the cable if it becomes frayed or broken.

## **RADIO SAFETY**

The REDFLY includes a Bluetooth radio transmitter and receiver. The REDFLY has been tested and meets the FCC, CE and European Union rules, regulations, and guidelines for Bluetooth service. Do not attempt to modify or change the REDFLY, as this could void regulatory compliance.

## **MEDICAL SAFETY**

Do not use the Bluetooth connection near any medical device sensitive to radio (RF) transmissions. If you use a heart pacemaker, keep the REDFLY at least six inches from your body to avoid interference.

## **TRAVEL SAFETY**

Do not use the REDFLY while operating a motor vehicle. Aviation authority or airline regulations may prohibit you from using the REDFLY Bluetooth connection while in flight. (Use your USB connection instead.)

Do not use Bluetooth in any location where posted notices require this (such as "Turn off two-way radio").

## **BATTERY SAFETY**

As with all batteries, do not crush, incinerate, or puncture the REDFLY battery. Keep the REDFLY away from small children.

# Celio Corp. End User License Agreement

IMPORTANT - USE OF THE REDFLY SOFTWARE IS SUBJECT TO LICENSE RESTRICTIONS. CAREFULLY READ THIS LICENSE AGREEMENT BEFORE USING THE SOFTWARE.

NOTICE TO USER: PLEASE READ THIS AGREEMENT CAREFULLY. THIS LICENSE IS A LEGAL "AGREEMENT" CONCERNING THE USE OF SOFTWARE BETWEEN YOU, THE END USER, EITHER INDIVIDUALLY OR AS AN AUTHORIZED REPRESENTATIVE OF THE COMPANY OBTAINING THE LICENSE, AND CELIO CORP. BY USING ALL OR ANY PORTION OF THE SOFTWARE YOU ACCEPT ALL THE TERMS AND CONDITIONS OF THIS AGREEMENT, INCLUDING, IN PARTICULAR THE LIMITATION ON: USE, TRANSFERABILITY, WARRANTY AND LIABILITY. YOU AGREE THAT THIS AGREEMENT IS ENFORCEABLE LIKE ANY WRITTEN NEGOTIATED AGREEMENT SIGNED BY YOU. IF YOU DO NOT AGREE, DO NOT USE THIS SOFTWARE. IF YOU ACQUIRED THE SOFTWARE ON TANGIBLE MEDIA (E.G. CD) WITHOUT AN OPPORTUNITY TO REVIEW THIS LICENSE AND YOU DO NOT ACCEPT THIS AGREEMENT, YOU MAY OBTAIN A REFUND OF THE AMOUNT YOU ORIGINALLY PAID IF YOU: (A) DO NOT USE THE SOFTWARE AND (B) RETURN IT, WITH PROOF OF PAYMENT, TO THE LOCATION FROM WHICH IT WAS OBTAINED WITHIN FOURTEEN (14) DAYS OF THE PURCHASE DATE.

DEFINITIONS. "Software" means (a) all of the content of the files, disk(s), CD-ROM(s) or other media with which this agreement is provided, including but not limited to (i) Celio Corp or third party computer information or software; (ii) digital images, stock photographs, clip art, sounds or other artistic works ("Stock Files"); (iii) related explanatory written materials or files ("Documentation"); and (b) modified versions, updates additions, and copies of the Software, if any, licensed to you by Celio Corp. "Use" or "Using" means to access, install, download, copy or otherwise benefit from using the functionality of the Software in accordance with the Documentation. "Permitted Number" means one (1) unless otherwise indicated under a valid license (e.g. volume license) granted by Celio Corp. "Computer" means an electronic device that accepts information in digital or similar form and manipulates it for a specific result based on a sequence of instructions. "Smartphone" means any mobile computing device that combines cellular communication capabilities with other computer capabilities that can accept information in digital or similar form and manipulate it for specific results based on sequence of instructions. "Celio Corp" means a company duly organized and validly existing under the laws of the state of Delaware, named as Celio Corp, and having its principal place of business at 265 East 100 South, Suite 280, Salt Lake City, UT 84111.

SOFTWARE LICENSE. As long as you comply with the terms of this End User License Agreement (the "Agreement"), Celio Corp grants to you a non-exclusive license to Use the Software for the purposes described in the REDFLY User's Guide.

General Use. You may use this program ONLY on up to the maximum number of smartphones and covered by the license package you have purchased.

You may also make one backup copy of the Software, provided your backup copy is not installed or used on any other smartphone.

INTELLECTUAL PROPERTY RIGHTS. The Software and any copies that you are authorized by Celio Corp to make are the intellectual property of and are owned by Celio Corp. The structure, organization and code of the Software are the valuable trade secrets and confidential information of Celio Corp. The Software is protected by copyright, including without limitation by United States Copyright Law, international treaties provisions and applicable laws in the country in which it is being used. You may not copy the Software, except as set forth in Section 2 ("Software License"). Any copies that you are permitted to make pursuant to this Agreement must contain the same copyright and other proprietary notices that appear on or in the Software. You agree not to modify, adapt or translate the Software. You also agree not to reverse engineer, decompile, disassemble or otherwise attempt to discover the source code of the Software except to the extent you may be expressly permitted to decompile under applicable law, if it is essential to do so in order to achieve operability of the Software with another software program, and you have first requested Celio Corp to provide information necessary to achieve such operability and Celio Corp has not made such information available. Celio Corp has the right to impose reasonable conditions and to request a reasonable fee before providing such information. Any information supplied by Celio Corp or obtained by you, as permitted hereunder, may only be used by you for the purpose described herein and may not be disclosed to any third party or used to create any software which is substantially similar to the extension of the Software. Requests for information should be directed to Celio Corp. Trademarks shall be used in accordance with accepted trademark practice, including identification of trademarks owners' names. Trademarks can only be used to identify printed output produced by the Software and such use of any trademark does not give you any rights of ownership in that trademark. Except as expressly stated above, this Agreement does not grant you any intellectual property rights in the Software.

TRANSFER. You may not rent, lease, sublicense, or authorize all or any portion of the Software to be copied onto another user's computer except as may be expressly permitted herein. You may, however, transfer all your rights to Use the Software to another person or legal entity provided that: (a) you also transfer to each this Agreement, the Software and all other software or hardware bundled or pre-installed with the Software, including all copies, Updates and prior versions to such person or entity; (b) you retain no copies, including backups and copies stored on a computer/smartphone; and (c) the receiving party accepts the terms and conditions of this Agreement and any other terms and conditions upon which you legally purchased a license to the Software. Notwithstanding the foregoing, you may not transfer education, pre-release, or not for resale copies of the Software.



MULTIPLE ENVIRONMENT SOFTWARE/ MULTIPLE LANGUAGE SOFTWARE/ DUAL MEDIA SOFTWARE/ MULTIPLE COPIES/ BUNDLES. If the Software supports multiple platforms of languages, if you receive the Software on multiple media, if you otherwise receive multiple copies of the Software, or if you received the Software bundled with other software, the total numbers of your computers on which all versions of the Software are installed may not exceed the Permitted Number. You may not rent, lease, sublicense, lend or transfer any versions or copies of such Software you do not Use.

**NO WARRANTY.** The Software is being delivered to you "AS IS" and Celio Corp makes no warranty as to its use or performance. CELIO CORP AND ITS SUPPLIERS DO NOT AND CANNOT WARRANT THE PERFORMANCE OR RESULTS YOU MAY OBTAIN BY USING THE SOFTWARE. EXCEPT FOR ANY WARRANTY, CONDITION, REPRESENTATION OR TERM TO THE EXTENT TO WHICH THE SAME CANNOT OR MAY NOT BE EXCLUDED OR LIMITED BY LAW APPLICABLE IN YOUR JURISDICTION, CELIO CORP AND ITS SUPPLIERS MAKE NO WARRANTIES CONDITIONS, REPRESENTATIONS, OR TERMS (EXPRESS OR IMPLIED WHETHER BY STATUTE, COMMON LAW, CUSTOM, USAGE OR OTHERWISE) AS TO ANY MATTER INCLUDING WITHOUT LIMITATION NONINFRINGEMENT OF THIRD PARTY RIGHTS, MERCHANTABILITY, INTEGRATION, SATISFACTORY QUALITY, OR FITNESS FOR ANY PARTICULAR PURPOSE.

**LIMITATION OF LIABILITY.** IN NO EVENT WILL CELIO CORP OR ITS SUPPLIERS BE LIABLE TO YOU FOR ANY DAMAGES, CLAIMS OR COSTS WHATSOEVER OR ANY CONSEQUENTIAL, INDIRECT, DIRECT, INCIDENTAL DAMAGES, OR ANY LOST PROFITS OR LOST SAVINGS, EVEN IF CELIO CORP REPRESENTATIVE HAS BEEN ADVISED OF THE POSSIBILITY OF SUCH LOSS, DAMAGES, CLAIMS OR COSTS OR FOR ANY CLAIM BY ANY THIRD PARTY. THE FOREGOING LIMITATIONS AND EXCLUSIONS APPLY TO EXTENT PERMITTED BY APPLICABLE LAW IN YOUR JURISDICTION. CELIO CORP AGGREGATE LIABILITY AND THAT OF ITS SUPPLIERS UNDER OR IN CONNECTION WITH THIS AGREEMENT SHALL BE LIMITED TO THE AMOUNT PAID FOR THE SOFTWARE, IF ANY. Celio Corp is acting on behalf of its suppliers for the purpose of disclaiming, excluding and/or limiting obligations, warranties and liability as provided in this Agreement, but in no other respects and for no other purpose.

**LIFE ENDANGERING ACTIVITIES.** NEITHER CELIO CORP NOR ITS SUPPLIERS SHALL BE LIABLE FOR ANY DAMAGES RESULTING FROM OR IN CONNECTION WITH THE USE OF SOFTWARE IN ANY APPLICATION WHERE THE FAILURE OR INACCURACY OF THE SOFTWARE MIGHT RESULT IN DEATH OR PERSONAL INJURY. YOU AGREE TO INDEMNIFY AND HOLD HARMLESS CELIO CORP AND ITS SUPPLIERS FROM ANY CLAIMS, LOSS, COST, DAMAGE, EXPENSE, OR LIABILITY, INCLUDING ATTORNEYS' FEES, ARISING OUT OF OR IN CONNECTION WITH SUCH USE.

**GENERAL PROVISIONS.** This Agreement contains the entire understanding between the parties relating to its subject matter and supersedes all prior or contemporaneous agreements, including but not limited to any purchase order terms and conditions, except valid license agreements related to the subject matter of this Agreement which are physically signed by you and an authorized agent of Celio Corp. This Agreement may only be modified by a physically signed writing between you and an authorized agent of Celio Corp. Waiver of terms or excuse of breach must be in writing and shall not constitute subsequent consent, waiver or excuse.

**COMPLIANCE WITH LICENSES.** If you are a business or organization, you agree that upon request of Celio Corp or Celio Corp's authorized agent, you will within thirty (30) days fully document and certify that Use of any and all Celio Corp Software at the time of the request is in conformity with your valid license obtained from Celio Corp.

If you have any questions regarding this agreement or if you wish to request any information from Celio Corp, please use the address and the contact information included in this product to contact Celio Corp.



# Regulatory Compliance

---

## FCC RADIO FREQUENCY EXPOSURE STATEMENT

The Redfly C8 has been evaluated under FCC Bulletin OET 65 and found compliant to the requirements as set forth in CFR 47 Sections 2.1091, 2.1093, and 15.247 (b) (4) addressing RF Exposure from radio frequency devices. The radiated output power of the Redfly C8 is well below the FCC radio frequency exposure limits. Nevertheless, this device should be installed in such a manner that the potential for human contact during normal operation is minimized. To ensure RF exposure compliance and to comply with RF exposure limits established in the ANSI C95.1 standards, the distance between the antenna and the user should not be less than 2 cm.

This device has been tested and found to comply with the limits of a Class B digital device, pursuant to Part 15 of the FCC Rules. This device complies with Part 15 of the FCC Rules. Operating this device is subject to the following conditions:

1. This device may not cause harmful interference.
2. This device must accept any interference received, including interference that may cause undesired operation.

**Note:** *This equipment has been tested and found to comply with the limits for a Class B digital device, pursuant to Part 15 of the FCC Rules. These limits are designed to provide reasonable protection against harmful interference in a residential installation.*

*This equipment generates, uses and can radiate radio frequency energy and, if not installed and used in accordance with the instructions, may cause harmful interference to radio communications. However, there is no guarantee that interference will not occur in a particular installation.*

*If this equipment does cause harmful interference to radio or television reception, which can be determined by turning the equipment off and on, the user is encouraged to try to correct the interference by one or more of the following measures:*

- Reorient or relocate the receiving antenna.
- Increase the separation between the equipment and receiver.
- Connect the equipment into an outlet on a circuit different from that to which the receiver is connected.
- Consult the dealer or an experienced radio/ TV technician for help.

